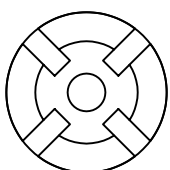
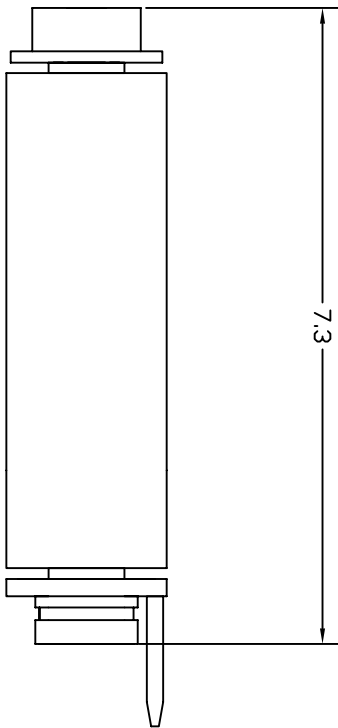
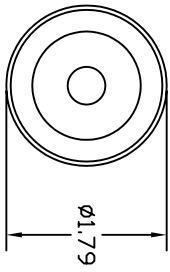


PROPRIETARY & TRADESECRET  
 INFORMATION  
 NOT TO BE DISCLOSED FOR USE OTHER  
 THAN THE PURPOSE OF OUR CUSTODY  
 WITHOUT EXPRESS WRITTEN PERMISSION OF  
 IEC CORPORATION

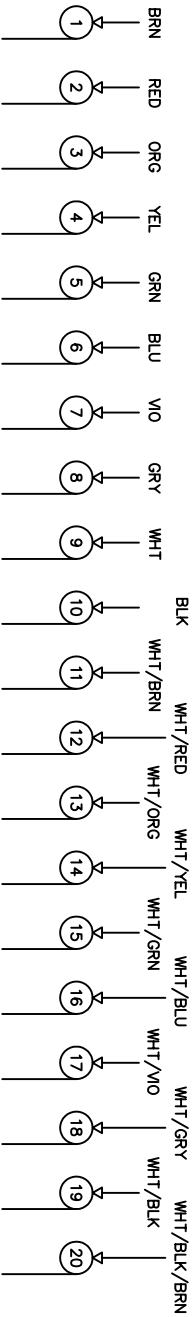


MECHANICAL SPECIFICATIONS  
 MAX OPERATING TEMP 392° F  
 ANDIZED ALUMINUM ENCASUREMENT PARTS

ELECTRICAL SPECIFICATIONS  
 7.5 AMPS, 1000 V CONTINUOUS

MOUNTING CONFIGURATION PER CUSTOMER SPECIFICATIONS

COLOR CODE BOTH ENDS  
 20 AWG TFE WIRE



ALL DIMENSIONS IN INCHES

HT-1,79-20-STD