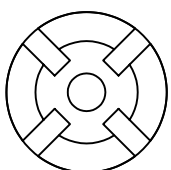
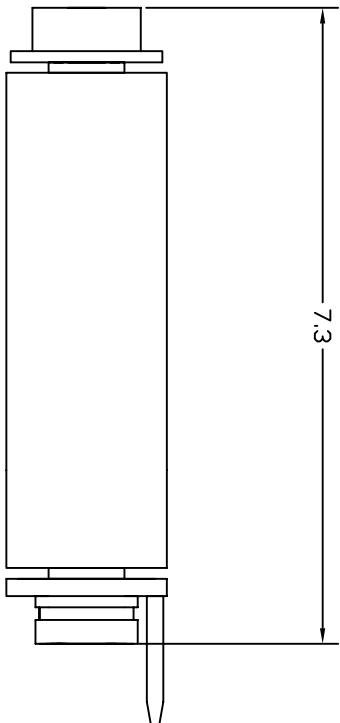
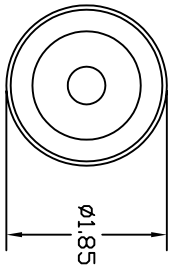


PROPRIETARY & TRADESECRET
 INFORMATION
 NOT TO BE DISCLOSED FOR USE OTHER
 THAN THE PURPOSE OF OUR CUSTODY
 WITHOUT EXPRESS WRITTEN PERMISSION OF
 IEC CORPORATION

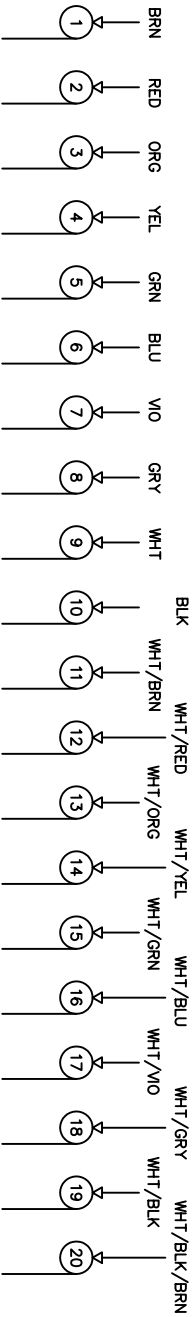
MECHANICAL SPECIFICATIONS
 MAX OPERATING TEMP 392° F
 ANDIZED ALUMINUM ENCASEMENT PARTS



ELECTRICAL SPECIFICATIONS
 7.5 AMPS, 1000 V CONTINUOUS

MOUNTING CONFIGURATION PER CUSTOMER SPECIFICATIONS

COLOR CODE BOTH ENDS
 20 AWG TFE WIRE



ALL DIMENSIONS IN INCHES

HT-1,85-20-STD